

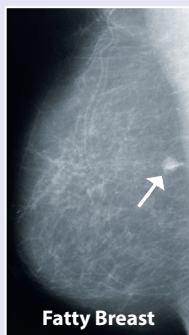


for Women with Dense Breasts  
and/or Breast Implants

## MAMMOGRAPHY

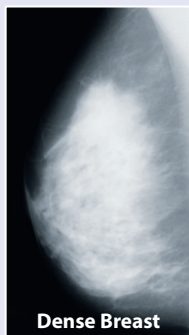
### Fatty Breasts

Spotting tiny cancers on the mammogram of a fatty breast is easier because cancer appears white on dark fatty-breast tissue, as shown here.



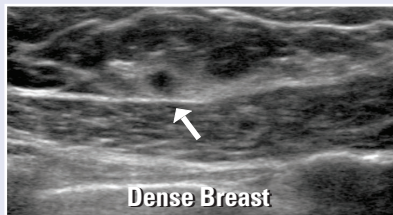
### Dense Breasts

Cancers are harder to find on the mammogram of a dense breast because both cancer and dense-breast tissue appear white.



## ULTRASOUND SonoCiné AWBUS

With ultrasound, cancers appear dark against the white background of dense-breast tissue, making the cancer easier to see.



This image shows a 6mm breast cancer not detected on the mammogram

St. Luke's Hospital was chosen as the first facility in Missouri to offer the SonoCiné Automated Whole Breast Ultrasound (AWBUS) to its patients. The St. Luke's Women's Center remains the exclusive provider of SonoCiné in the St. Louis area.

For more information about the SonoCiné AWBUS examination or the St. Luke's Women's Center, please contact:

Tel: 314-205-6267  
or visit: [stlukes-stl.com](http://stlukes-stl.com)



232 S. Woods Mill Road  
Chesterfield, MO 63017  
[stlukes-stl.com](http://stlukes-stl.com)



St. Luke's Hospital was the first facility in St. Louis and the second in the United States to be accredited in mammography by the American College of Radiology (ACR). St. Luke's has also been designated a Breast Imaging Center of Excellence by the ACR for excellence in breast imaging.

Data cited in this brochure was derived from:

Pisano ED, et al, "Diagnostic Performance of Digital versus Film Mammography for Breast Cancer Screening", *New England Journal of Medicine*, Vol 353, No. 17, 2005, pp 1773-83  
Berg WA, et al, "Combined Screening With Ultrasound and Mammography vs Mammography Alone in Women at Elevated Risk of Breast Cancer", *Journal of the American Medical Association*, Vol 299, No. 18, 2008, pp 2151-2163  
Kelly KM, et al, "Breast cancer detection using automated whole breast ultrasound and mammography in radiographically dense breasts", *European Radiology*, Vol 20, 2010, pp 734-742



Mammography Misses  
50 to 60% of Breast Cancers  
in Women with  
Dense-Breast Tissue

*Finding Breast Cancers When They Are Small*

Peace of Mind  
Beyond Your Mammogram

# What is SonoCiné® AWBUS

For women with dense breasts and/or breast implants, SonoCiné Automated Whole Breast Ultrasound (AWBUS) is a supplementary ultrasound examination of both breasts designed to find small cancers that are missed by mammography. It is not a replacement for screening mammography. However, mammography is not a perfect examination for women with dense breasts. SonoCiné AWBUS can increase confidence in your diagnosis.

Studies show that more cancers are found in women with dense-breast tissue when an ultrasound examination is added to the screening mammogram.

Our goal is to find breast cancers when they are small and easier to treat.

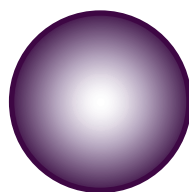
## Research Shows

- Early detection can increase breast cancer survival.
- Finding cancers when they are small saves lives.
- Mammography misses 50 to 60% of all breast cancers in women with dense-breast tissue (DBT).
- Automated Whole Breast Ultrasound (AWBUS) in addition to mammography, may find as much as 100% more cancers in women with dense breasts than can be found by mammography alone.
- Mammography detects cancers (like calcifications) that cannot be seen well by ultrasound and ultrasound detects cancers (like fast growing invasive cancers) that cannot be seen well by mammography.

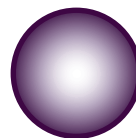
## Ask Your Doctor If You Have Dense Breasts.



## Average size cancer found by ...



Self-Exam  
(approx 25mm)



Mammography  
(approx 17mm)



Ultrasound in  
Dense Breasts  
(approx 10mm)

**If you do have dense breasts and/or breast implants, consider a SonoCiné AWBUS examination in addition to your mammogram.**



**The SonoCiné AWBUS is a fully documented whole breast examination designed to find breast cancers when they are small and easier to treat.**

## What to Expect

SonoCiné is an Automated Whole Breast Ultrasound examination. Ultrasound uses sound waves and is safe for unborn children and therefore, safe for your breast tissue!

- It is painless
- No breast compression
- No radiation
- No injections
- Takes about 20 to 30 minutes
- Is permanently recorded for your physician's review and follow-up
- Interpretation of your study is done by a radiologist
- A report is sent to your referring provider following the examination

## Whole Breast Coverage (All at Risk Breast Tissue)



Lower Lymph Nodes



Outer Breast Tissue



Clavicle



Inner Breast Tissue

## Is SonoCiné AWBUS Covered by Insurance?

SonoCiné AWBUS is cleared by the FDA as an additional examination in conjunction with screening mammography. Because it is considered supplementary, some insurance companies currently do not cover the cost of this examination. Check with your insurance plan.